



# Zumara

## Installation & Quick Start Guide

### Contents

1.	Request a Zumara Trial .....	2
2.	Host PC Requirements .....	2
3.	Limitations .....	3
4.	Download Zumara Software .....	3
5.	Install Zumara Software .....	3
6.	Install Zumara Help .....	3
7.	Software Configuration .....	4
8.	Select & Open a Template Test Profile.....	5
9.	Edit Your Profile .....	6
13.	Run Your Profile.....	7
14.	Profile Running.....	7
15.	Edit Protocol Event File.....	7
16.	WAN Protocols.....	7





# Zumara

## Installation & Quick Start Guide

Thank you for choosing to evaluate Zumara software. Zumara software is provided with template profiles to help you get started with many applications. Each template profile has been fully tested and will automatically attach itself to a suitable protocol filter. Please follow the Quick Start instructions as follows:-

### 1. Request a Zumara Trial

Request a fully featured 7 day trial of Zumara software by completing the request form at:  
<http://www.pds-test.co.uk/trial.html>

### 2. Host PC Requirements

**Browser:** Internet Explorer Recommended

**Operating System:** Windows 2000, XP or Vista - USER MUST HAVE ADMINISTRATOR RIGHTS

**Windows Vista:** Vista User Account Control (UAC) Administrator prompts should be disabled when using the current version of the software. Follow the instructions below:

Open Control Panel → User Accounts → Turn User Account Control On or Off  
Tick off the checkbox and click OK (as seen below).



**System Protection Software (such as those associated with some Anti Virus Packages etc):**  
System changes must be allowed for successful operation of the trial.

**Minimum Memory:** 512MB\*

**Minimum Processor:** 2.0 GHz

\*The memory required increases with the number of LAN interfaces the user wishes to simulate (up to seven). Each Zumara process requires about 32MB.





# Zumara

## Installation & Quick Start Guide

### 3. Limitations

Not supported: Windows 98  
Not available on the current version (to do):

- Adapter for dialup and VPN capture.
- Wireless Adapter.
- Language profile filtering.
- Auto-MAC configuration for high speed traffic generation.

### 4. Download Zumara Software

Once the trial request form has been completed with valid details you will be emailed a download link and 12 digit serial number which will be requested during the installation.

Go to [www.cybele-services.com](http://www.cybele-services.com) and enter your serial number in the login area on the left hand side and click 'Go'.

When the seven day period expires, if you wish to extend the trial, contact us for a trial period extension.

### 5. Install Zumara Software

You must have administrator rights on the computer and any Clarinet or Zumara application must be closed.

Save the Zumara package to a convenient location on your PC.

Unzip the package and you will see 2 folders: Z-HELP and Z-RT.

Start → Run, browse and select **Z-RT\SETUP.EXE**, follow the onscreen prompts.

Safenet Sentinel Protection will be installed. Click 'OK'.

WinPcap: The Windows Packet Capture Library will be installed. Click 'OK' and follow the onscreen prompts to continue the installation.

Setup will complete. Restart Windows.

### 6. Install Zumara Help

Start → Run, browse and select **Z-Help\SETUP.EXE**, follow the onscreen prompts.





# Zumara

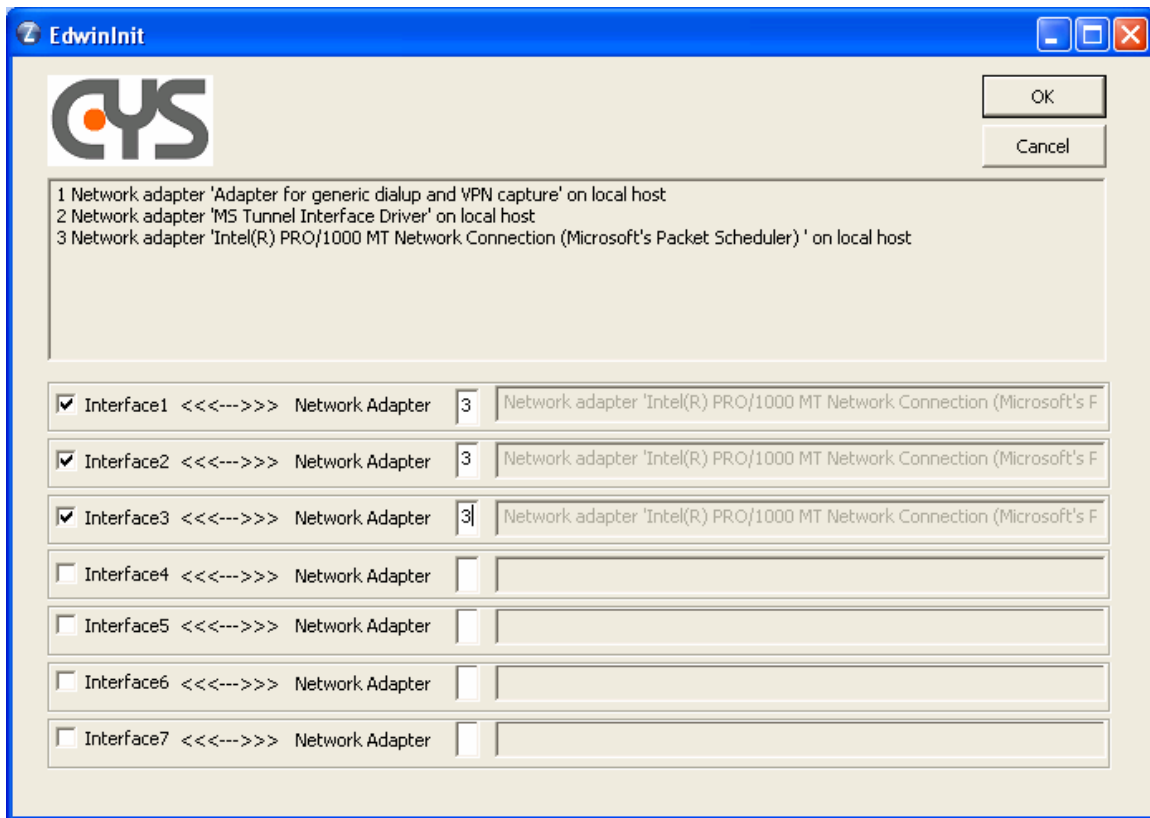
## Installation & Quick Start Guide

### 7. Software Configuration

Once installed you will see that a new Program group has been created called 'Zumara RT 12.0'. Use 'Start, All Programs, Zumara RT 12.0' and select the item 'Edwin Init'. This will show you a list of Network Adapters available on the PC host and allow you to select which are used. It is possible to select different Network Adapters for each LAN endpoint or one Network Adapter for all LAN endpoints if you prefer.

The Network Adapter you have chosen can also be used with OEM software such as a Gatekeeper or Proxy. When you enter your choices and click 'OK' you will be asked if you wish to save the configuration.

In the example below, Interface 1, 2 and 3 are using Network Adapter 3 on the PC:



Several Interfaces can be mapped to the same adapter, and several Adapters can be used to simulate several different hardware interfaces.





# Zumara

## Installation & Quick Start Guide

### 8. Select & Open a Template Test Profile

From the 'Zumara RT 12.0' group select 'Zumara' to open the Manager where all test profiles, filters and event files are accessed, stored and controlled.

On the 'Manager Dialog -1' panel click 'Profile' followed by 'New' and then select the protocol or interface you would like to use. All VoIP profiles are stored under 'LAN - (Ethernet IEEE 802.3)' but if you would like to save and edit profiles for other protocols you can do this and will be able to see all of the configuration options available.

Click on 'LAN' then 'Next' to see the range of template profiles available for VoIP.

The options include:

**Lan\_simu\_h323\_endpoint\_RAS\_fs**  
*H323 endpoint using fast start & G.711*

**Lan\_simu\_h323\_endpoint\_RAS\_fs\_RTP\_analog**  
*As above with example of analogue configuration*

**Lan\_simu\_h323\_endpoint\_RAS\_ss**  
*H323 endpoint using slow start and G.711*

**Lan\_simu\_sip\_ua**  
*SIP endpoint using G.711*

**Lan\_simu\_sip\_ua\_g729**  
*SIP endpoint using G.729*

**Lan\_simu\_sip\_ua\_isup**  
*Simulation of ETSI ISUP over SIP: SIP-t*

**Lan\_simu\_sip\_ua\_px**  
*SIP endpoint simulation using a Proxy and G.711*

**Lan\_simu\_sip\_ua\_analog**  
*SIP endpoint with G.711 and an example of analogue configuration*

Please select the profile which you think will be the closest match for your application.






# Zumara


## Installation & Quick Start Guide

### 9. Edit Your Profile

LAN profiles are in two parts, you can edit the first part (**.acp file**) by clicking  on the **Manager Dialog - 1 panel**. This profile defines the ID number of the interface, click on the **General tab** to change/define any of the following:

- The name of the 'Protocol file:' where all of the events are stored.
- The 'Protocol filter:' to be used for the display.
- Change the recording mode from 'Overwrite' to 'Append' or 'Circular'.
- Define a maximum file size (where Ko = KBytes and empty means infinite).
- Attach a Statistics filter.
- Define a Minimum duration (how long the profile will stay running after the last call has been generated).
- Name the 'Next profile:' if you wish to chain profiles together.

10. Now go back to the Interface 1 to click on '**monitored addresses**' and select a range of MAC addresses you wish to monitor or click on '**Call simulator**' to specify which IP profile should be used with this LAN profile.

11. Make a note of the IP profile name and then open this by clicking , click on the down arrow and select it from the list provided. The IP profile allows you to configure the MAC address and IP address of your endpoint (using the '**Initialize emulators**' then '**MAC**' or '**IP**' button), configure a subnet mask, enter an IP address for the Gateway and enter the address of an H.323 Gatekeeper (using the '**H323**' then '**RAS settings**' button) or a SIP Proxy (using the '**SIP**' button).

12. The IP profile has Generator and Responder buttons which allow the user to configure up to 50 independent calls to any IP address and with any required message content. When you look at any of the individual calls (such as H323 Destination 1 or SIP Destination 1), click on '**Edit**' and then '**SETUP**' or '**INVITE**', any lines showing 0.0.0.0 will be automatically completed by the Zumara software using parameters entered in the '**Initialize emulators**' buttons by the user. For SIP, please note that you can select which fields are automatically updated (using '**Auto Update**' button) and if you de-select them, you will need to code manually. Also if you select '**No parser**' (no checking) you will need to manually code all message fields because this will no longer be automatic.






# Zumara

## Installation & Quick Start Guide

### 13. Run Your Profile

Once your profile is created, click  on the **Manager Dialog - 1** panel in order to select and run it. Each profile allows calls to be generated manually by removing the '**Starting delay**' for each selected communication and launching the call using a list of Real-Time options below the Manager. If you enter a starting delay, the calls will be generated automatically.

### 14. Profile Running

When a profile is running, an event editor Window will open which provides a full decode of all protocol messages exchanged between the Zumara system and the device under test. It is possible to search up and down through this window whilst concurrently capturing new events. A list of Real-Time options such as Call, Clear, Clear All, Ping and others will appear below the Manager panel allowing manual control.

For high performance during profile execution, it is recommended that all other programs are closed.

### 15. Edit Protocol Event File

You can edit the Protocol Event File when the profile is finished. Click Event → Open protocol. Choose the 'event file' and the 'filter file' you want to edit, and then click OK.

### 16. WAN Protocols

If you are interested in WAN interoperability applications, a wide range of WAN template profiles for ISDN, Q-SIG, SS#7, V5.1 and V5.2 are available within the Zumara software. These may be accessed using the same method described in items 3 and 4. Clarinet hardware interface pods for basic rate ISDN S-T/U (model 2002) or E1/T1 (model 2001) will be required to run the profiles. However, even without the necessary hardware you will be able to appreciate the software capabilities by exploring the software, editing and creating test profiles.

