



- EdWin - Installation -

EdWin is a software package which allows the use of a PC NIC interface for LAN protocol analysis and simulation.

When used with Clarinet-RT, it supports most features from the original hardware with better performance, and it will offer new capabilities such as multiple IP, advanced filtering, remote control, high-performance traffic generation and more.

1. Requirements

Recommended:

- Processor min 2.0 GHz
- Memory min 512MB
- Windows 2000 or Windows XP
- Clarinet-RT minimal release 11.1-06349

The required memory increases with the number of interfaces simulated. Each EdWin process requires about 32MB.

2. Limitations

Not supported:

- Windows 98

Not available with current version (TODO):

- Adapter for dialup and VPN capture
- Wireless Adapter
- Language profile filtering
- Auto-MAC configuration for high speed traffic generation

3. Installation

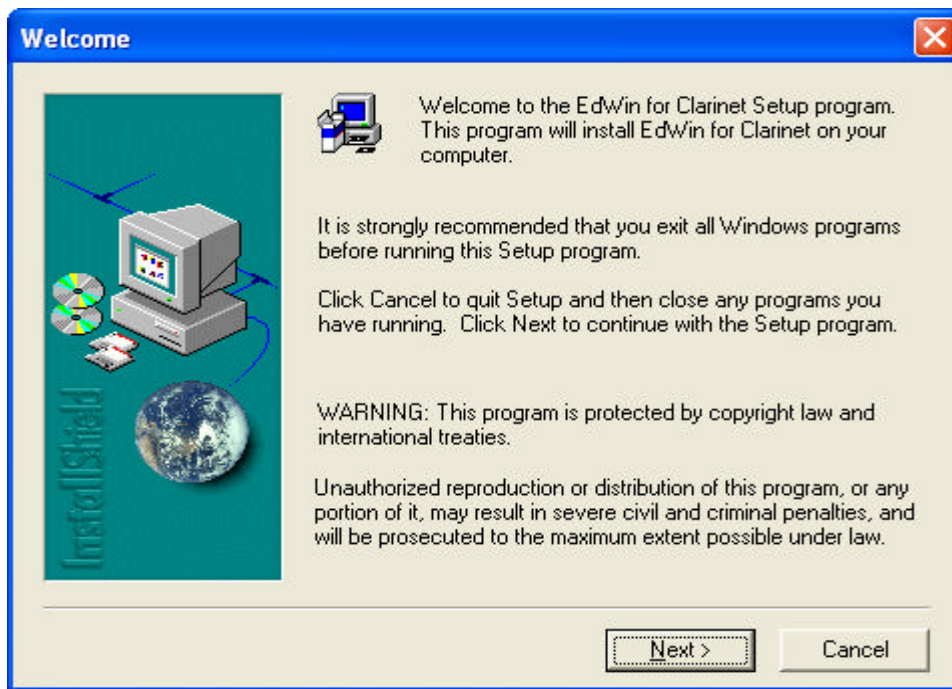
To install the software, you must have Administrator rights on the computer, and any Clarinet or EdWin application must be closed.

3.1 Run Clarinet-RT Setup program

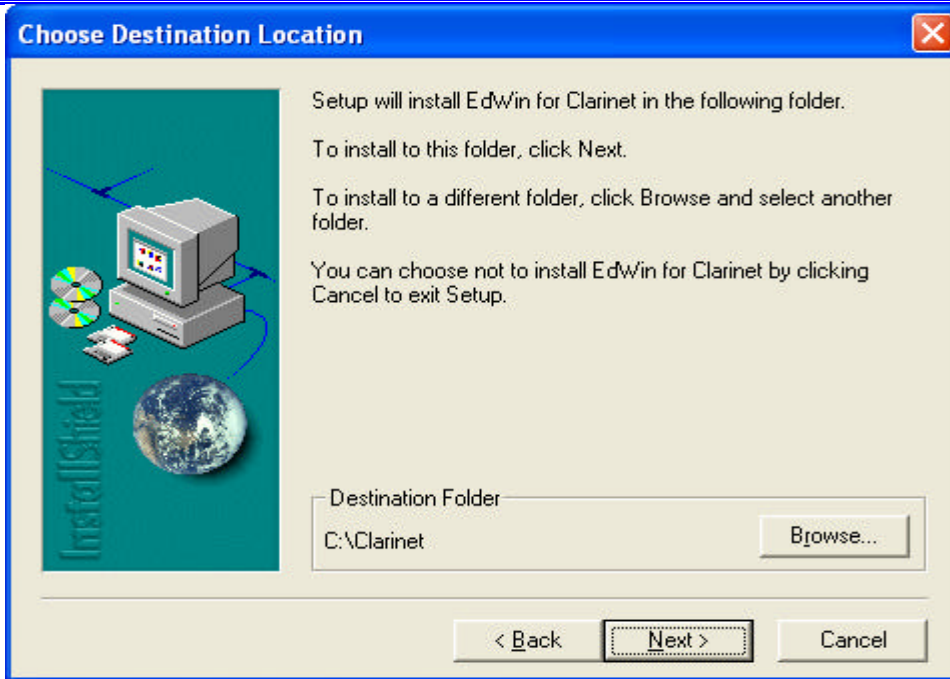
Install the Clarinet-RT as specified in the documentation (Minimal version is v11.1-06349).

3.2 Run EdWin Setup program

Run SETUP.EXE from EdWin installation directory:



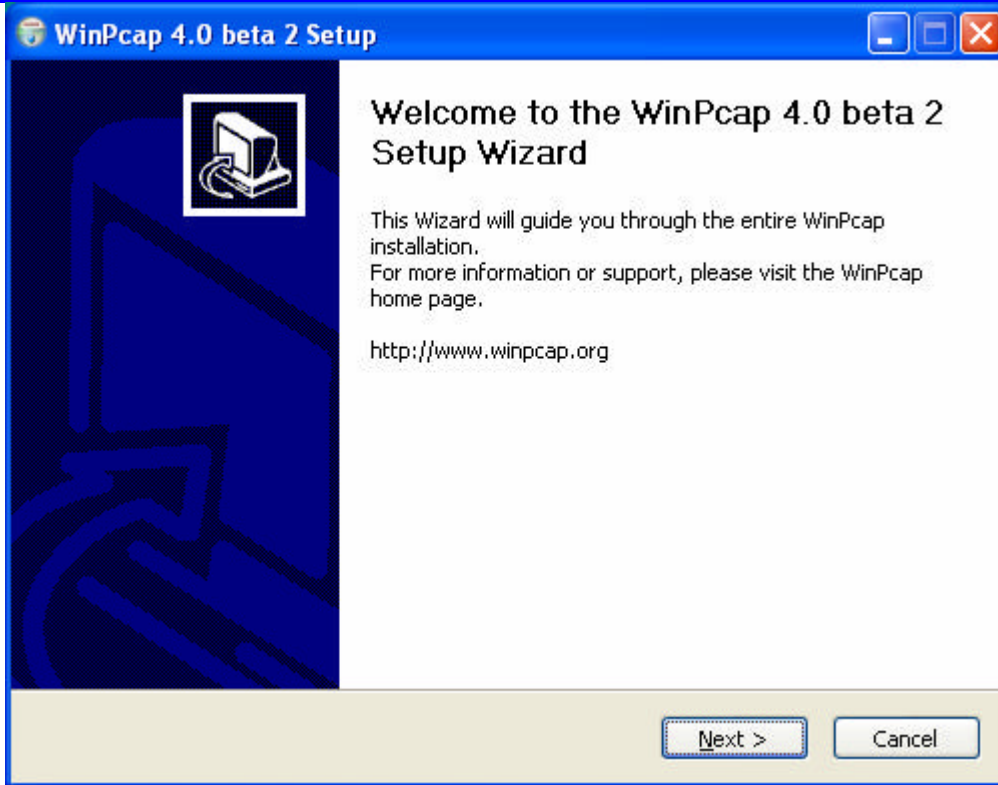
EdWin for Clarinet must be installed in the same destination folder used for the Clarinet-RT:



After EdWin has been installed, the WinPcap software from “Politecnico di Torino” will be installed:



Follow instructions from the WinPcap Setup Wizard:

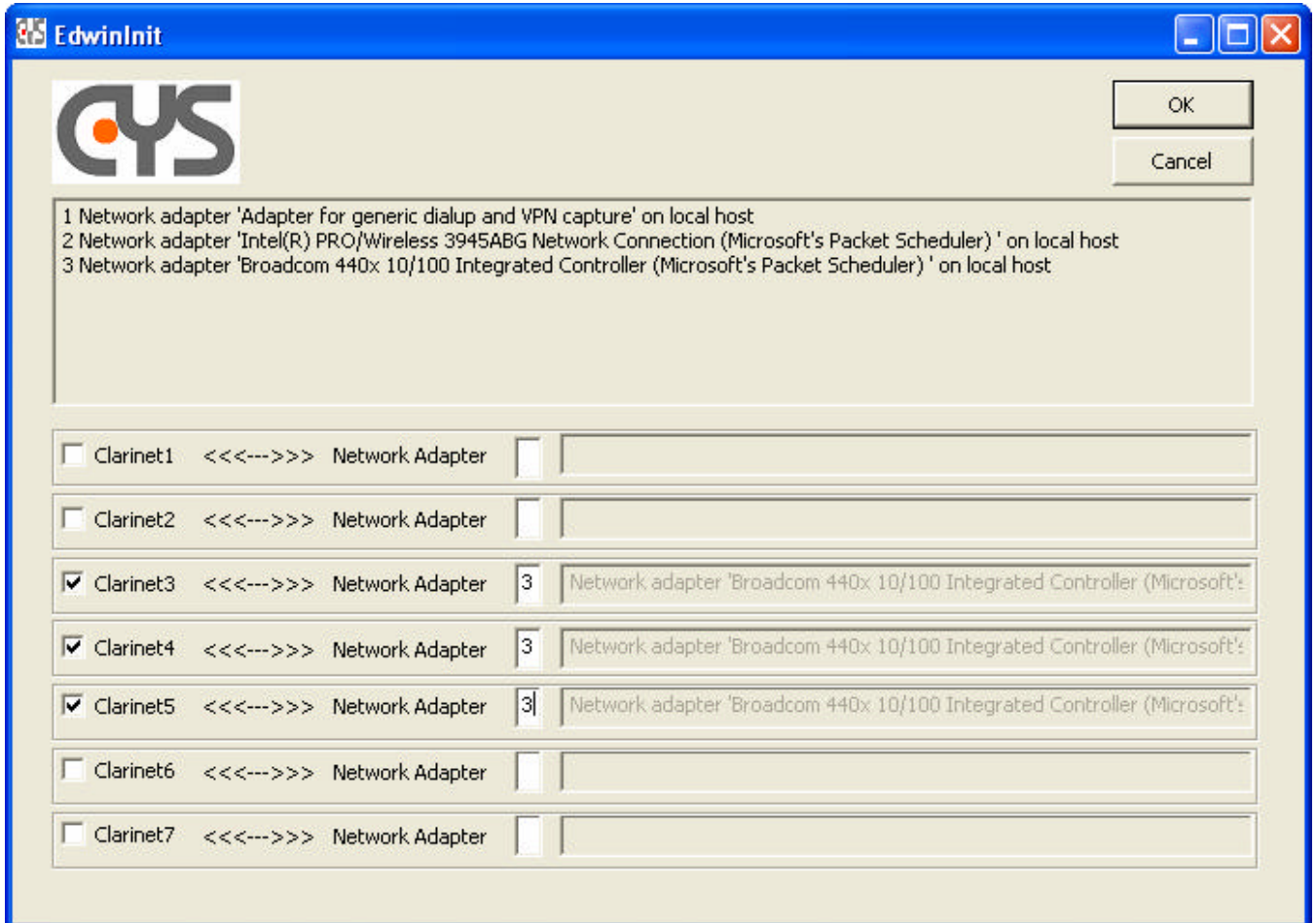


After completion of the installation, you have to configure the EdWin software.

4. Software Configuration

Use the EdwinInit program, from the EdWin 1.0 group, to initialize the hardware configuration.

In the example bellow, the Clarinet 3, 4, and 5 are using the Adapter 3 of the PC:



Several Clarinets can be mapped to the same adapter, and several Adapters can be used to simulate several different hardware interfaces.

After hardware configuration, the EdWin loader must be invoked.

5. Profile Execution

A license file or hardware security key is required to run a profile that uses an EdWin process.

If no valid license is detected, profile exec is limited to 20 seconds, and the following line is inserted in ace trace event file:

```
C2 ERROR: No license entry for "EdWin for Windows"  
18:07:30/000.9 2- MONITORING OFF
```

For high performance, it is recommended to close other programs whilst running the profile.