



INSTALLATION

D-LINK Fast Ethernet Adapter USB 2.0

1. Requirements

Recommended:

- Processor min 2.0 GHz
- Memory min 512 MB RAM*
- Windows 2000, Windows XP, Windows VISTA (users must have administrator rights)
- Clarinet-RT minimal release 11.1-06349

* The memory required increases with the number of LAN interfaces the user wishes to simulate (up to seven). Each Zumara process requires about 32 MB.

2. Limitations

Not supported :

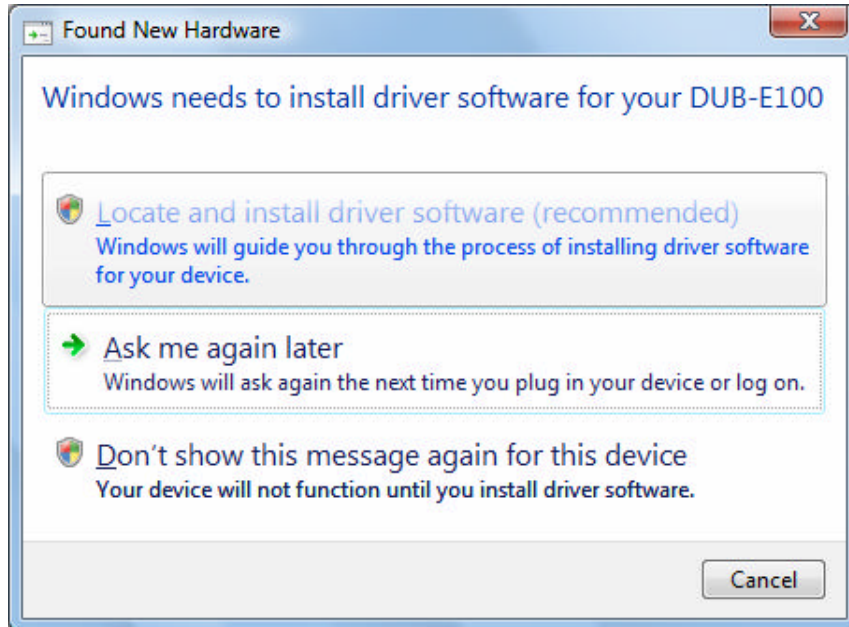
- Windows 98

3. Installation

Follow the instructions below.

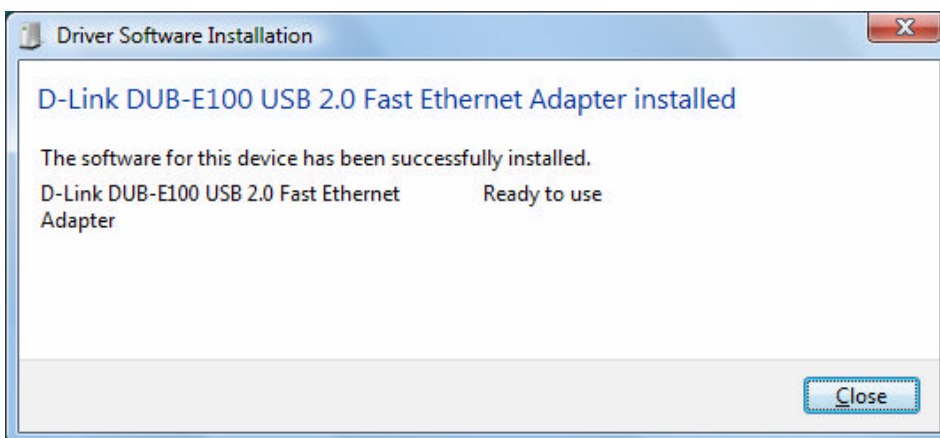
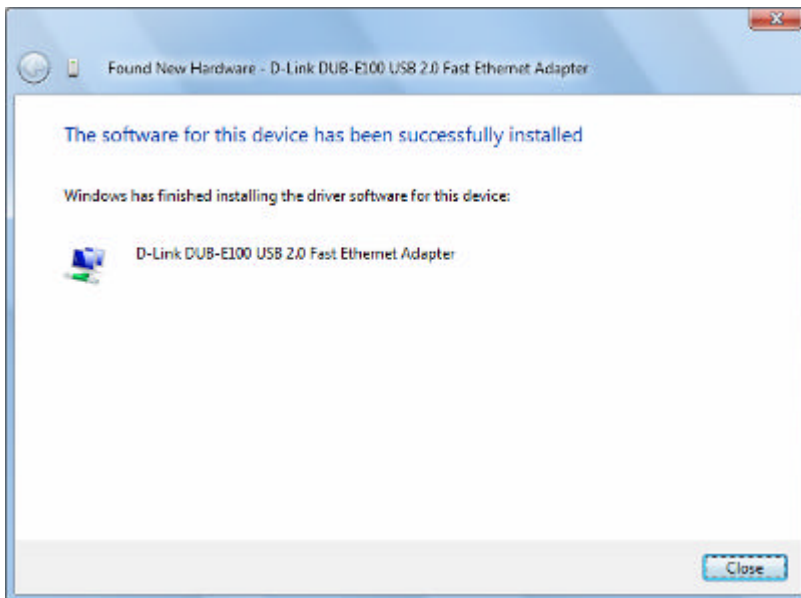
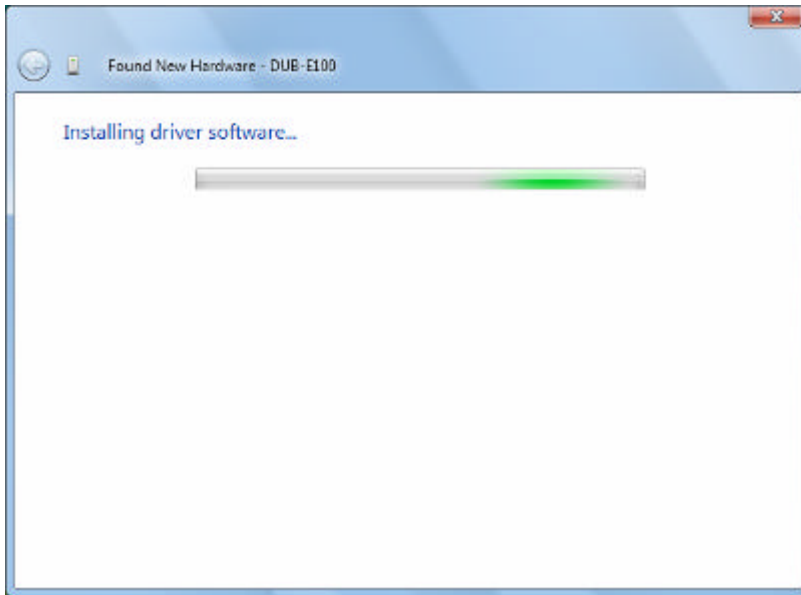
Connecting the DUB-E100 to your computer

Plug the D-link Fast Ethernet Adapter USB cable into an available USB port. Windows will detect new hardware and prompt you for the driver. Follow the steps below to proceed to the driver installation.



Insert the disk supplied on the cd-rom driver. The installation will start automatically.



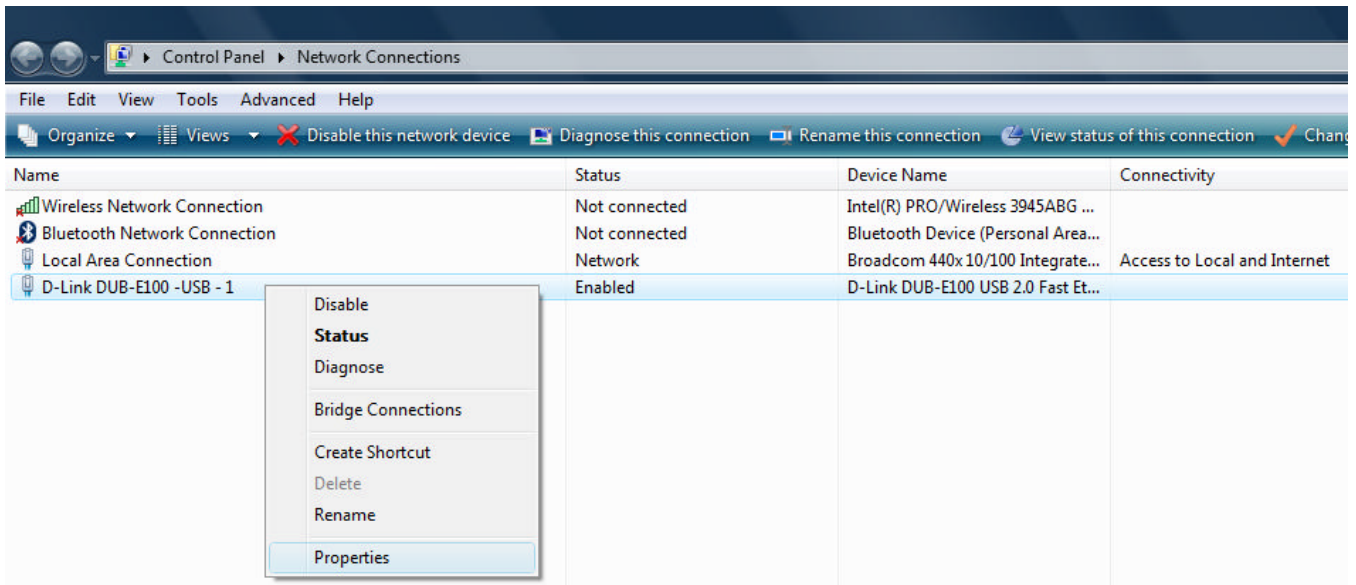


End of the installation - Close the window

Connect an Ethernet cable to the Ethernet port on the DUB-E100.
Attach the other end of the Ethernet cable to your network switch, hub or router.

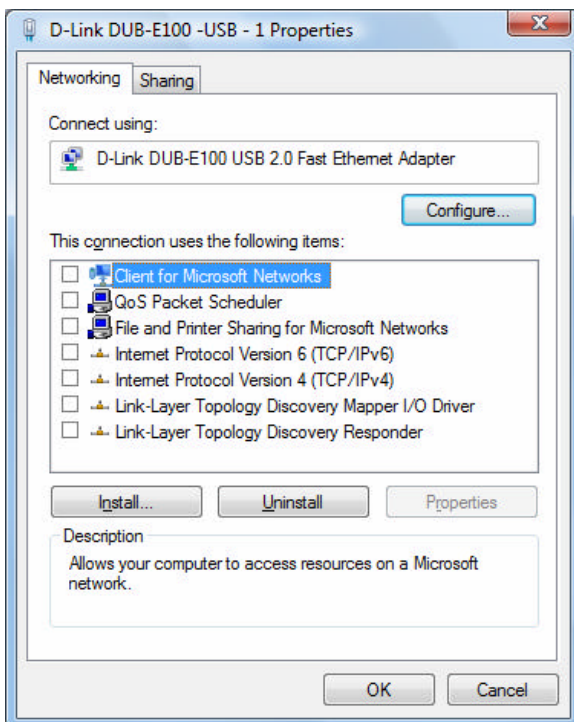
Network Configuration

Control Panel → Network connections



Right Click → Properties

Strip all the protocol stack compartments (as shown below) → Click OK

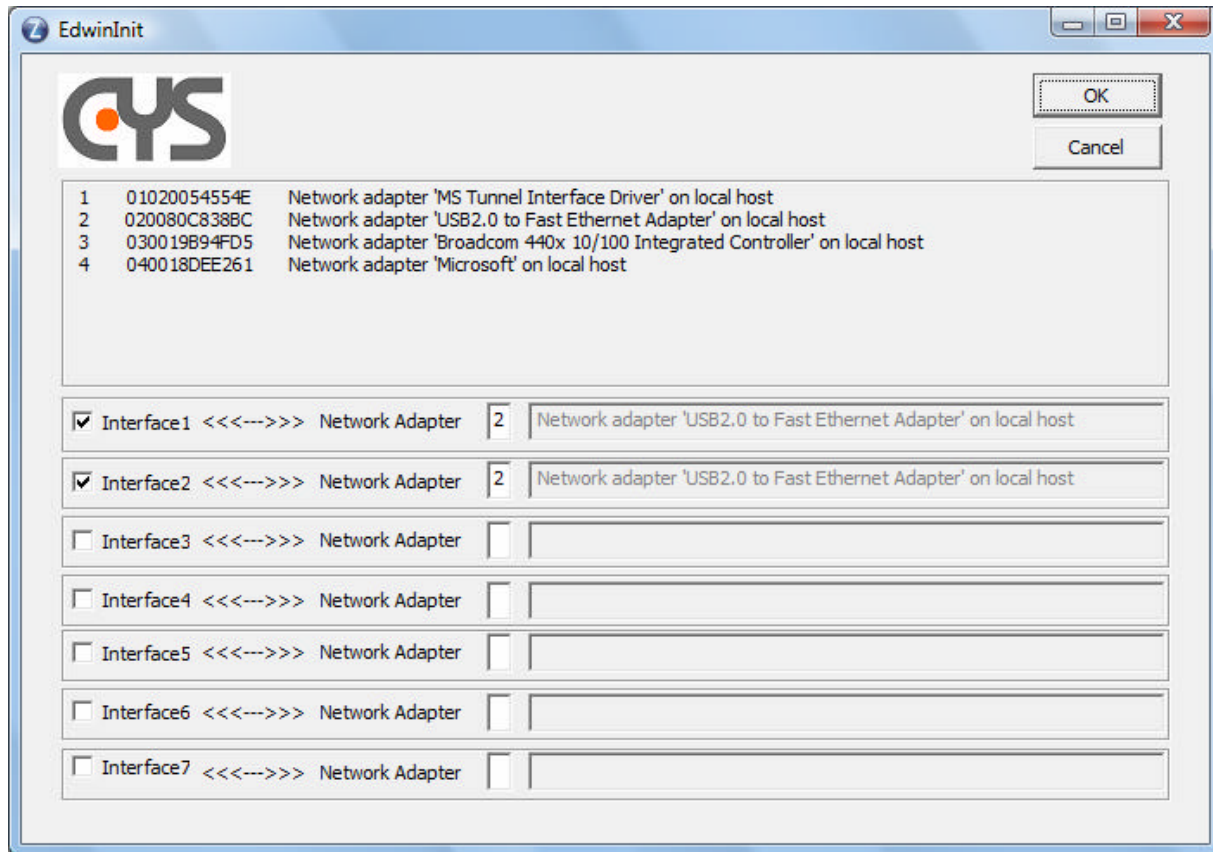


Your DUB-E100 is now ready to use.

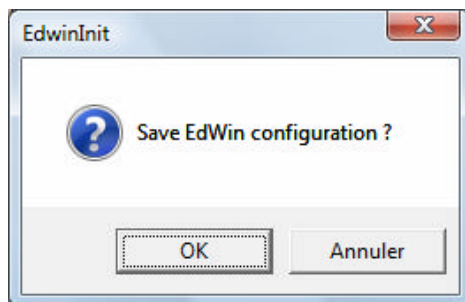
Zumara Configuration

Open EdWin init.

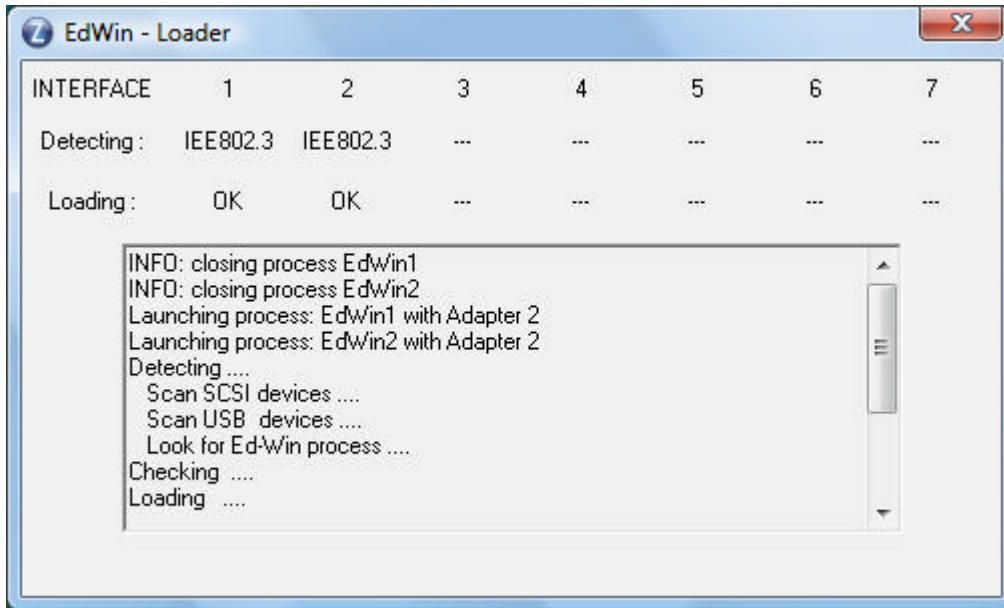
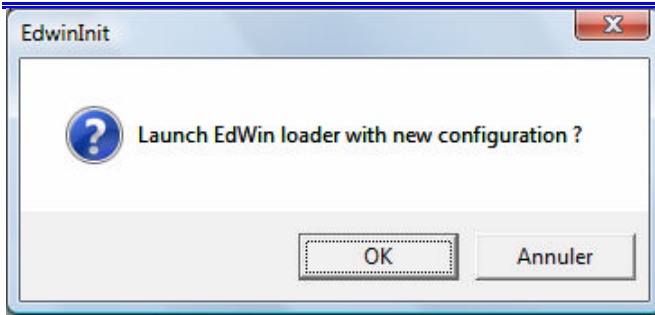
Tick each interface that you want to launch. In front, choose the number of any available network adapter that you wish to use. Then, click OK to save.



Save EdWin configuration → OK



Launch Edwin Loader with new configuration → OK



Run Zumara

