



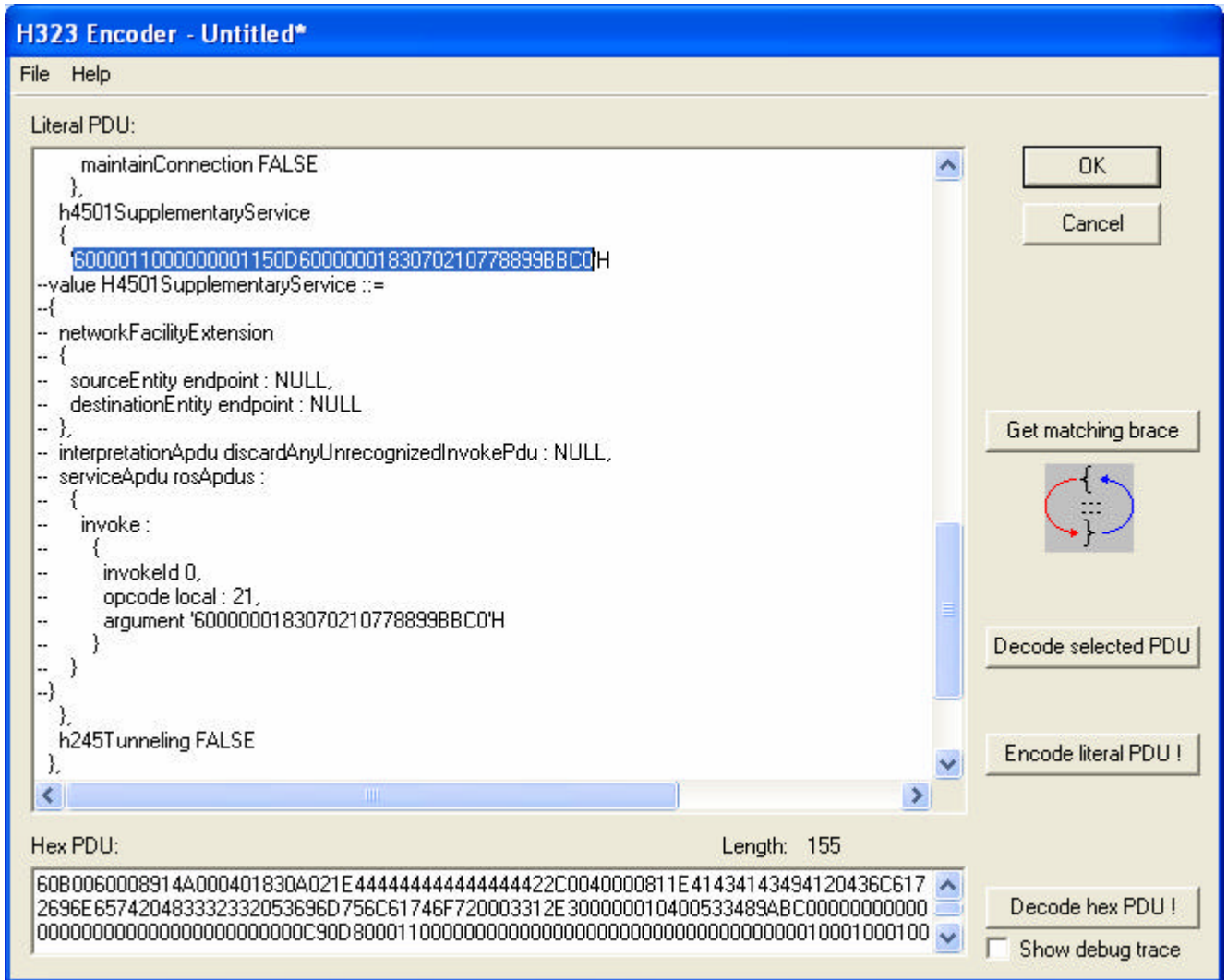
- H450 - Encoder -

This application note describes how to encode an H.450 Supplementary Service using the H.323 Encoder of the Profile Editor.

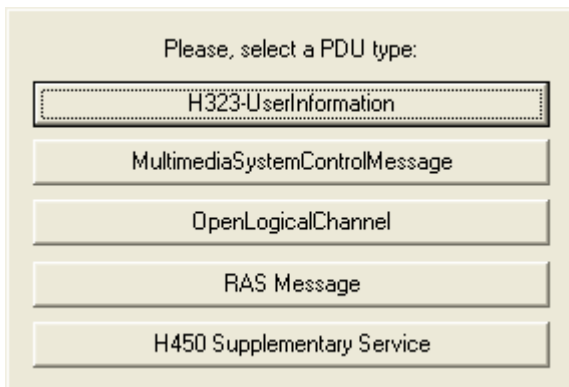
Minimal version of H323_ENC.DLL must be 12.0.0. This file is located in c:\Clarinet\Clatools directory.

2. Decode H450SupplementaryService

Select the H450SupplementaryService value, and click the “Decode Selected PDU” button.



Select H450 Supplementary Service:



The Supplementary Service is displayed using ASN.1 Value Notation:

The screenshot shows the 'H323 Encoder' application window. The title bar reads 'H323 Encoder' and the menu bar contains 'File' and 'Help'. The main area is titled 'Literal PDU:' and contains a text editor with the following ASN.1 Value Notation:

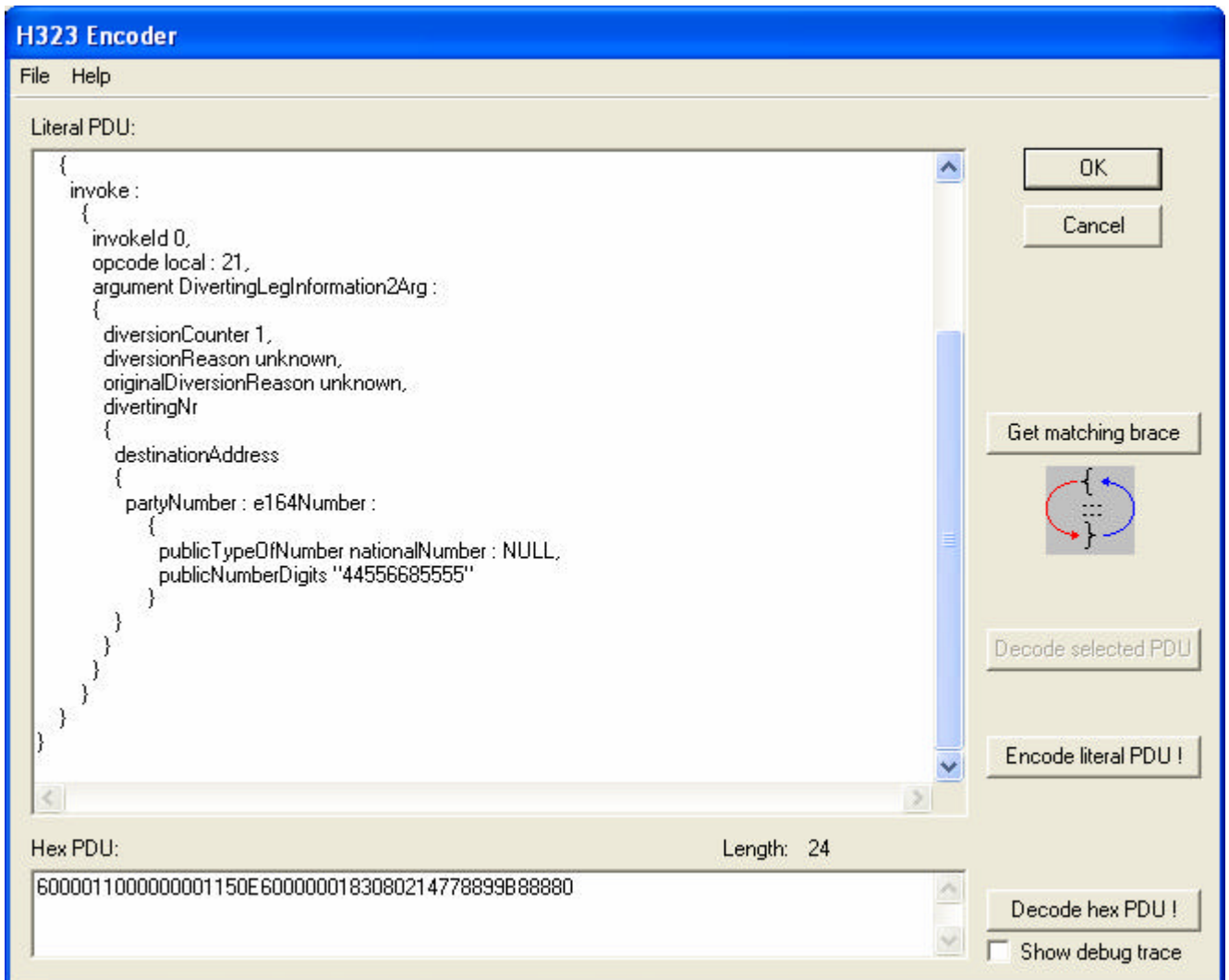
```
value H4501SupplementaryService ::=
{
  networkFacilityExtension
  {
    sourceEntity endpoint : NULL,
    destinationEntity endpoint : NULL
  },
  interpretationApdu discardAnyUnrecognizedInvokePdu : NULL,
  serviceApdu rosApdus :
  {
    invoke :
    {
      invokeld 0,
      opcode local : 21,
      argument DivertingLegInformation2Arg :
      {
        diversionCounter 1,
        diversionReason unknown,
        originalDiversionReason unknown,
        divertingNr
        {
          destinationAddress
          {
            partyNumber : e164Number :
            {
              publicTypeOfNumber nationalNumber : NULL,

```

Below the text editor, the 'Hex PDU:' field displays the hexadecimal value: 6000011000000001150D60000001830702107788998BC0. The 'Length:' is indicated as 23. On the right side of the window, there are several buttons: 'OK', 'Cancel', 'Get matching brace' (with a brace icon), 'Decode selected PDU', 'Encode literal PDU!', and 'Decode hex PDU!'. A checkbox labeled 'Show debug trace' is located at the bottom right.

3. Edit the Supplementary Service

Edit the Supplementary Service destination address, and click the “Encode Literal PDU” button:



Click OK to Exit and to update the User-User IE.